

GF - GENTLE FLOW COMMERCIAL COOLERS

6 MODELS
5,400 BTUH to 28,000 BTUH



- Unique drain pan hinged front and rear for easy cleaning of interior coil surface and fan alignment.
- Total accessibility to expansion valve, electrical controls and heaters through removable end panel.
- Staggered tube in direction of air flow.

“The Heat Transfer Experts”

Featuring

- Drain pan pitched to outlet fitting provides positive drainage.
- Dual drain fitting provides for 3/4" OD hose or 1/2" F.P.T.
- Entire unit of heavy gauge smooth bright aluminum for ease of cleaning
- Fan guards and all non aluminum components are coated to protect against corrosion.
- Expansion valve heated during electric defrost.
- Penn termination control standard on electric and hot gas defrost units. Adjustable setting without removing end panel.
- Connection for external equalizer line from TX valve provided.
- Motor mounts isolated to minimize sound transmission and eliminate vibration.
- Heavy duty steel banded crating assures good condition at destination.
- Lifetime lubricated motors.
- All electrical components completely factory wired.
- Protective coating for corrosive or acid atmosphere optional.
- Coil construction is 5/8" copper tube with .010 aluminum fins.

Correction Factors R12-R22 [Capacity X Factor]

Suct. Temp. °	10 - 12°	Operating TD 12 - 15°	20 - 25°
+30	1.0	1.0	.95
+20	1.0	1.0	.93
+10	1.0	.95	X

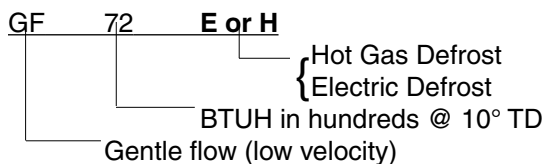
Capacity and Specifications

Model	Capacity BTUH			Coil Face Area	Fan Data 12" Dia. All Mod.		Motor Data		Electric Defrost 230/1	
	10°TD	12°TD	22°TD*		No.	CFM	115/1	230/1	Watts	Amps
GF-54	5400	6480	11280	4.0	2	1150	4.4	2.2	1500	6.6
GF-72	7200	8640	15050	4.0	2	1150	4.4	2.2	2000	8.8
GF-105	10500	12600	21945	6.0	3	1750	6.6	3.3	3000	13.2
GF-134	13400	16080	28000	7.5	3	2150	6.6	3.3	4000	17.4
GF-192	19200	23040	40130	11.3	4	3250	8.8	4.4	5000	21.8
GF-280	28000	33600	58520	15.0	4	4350	8.8	4.4	6000	26.2

All units 6 F.P.I.

*Produce and meat prep. rooms only.

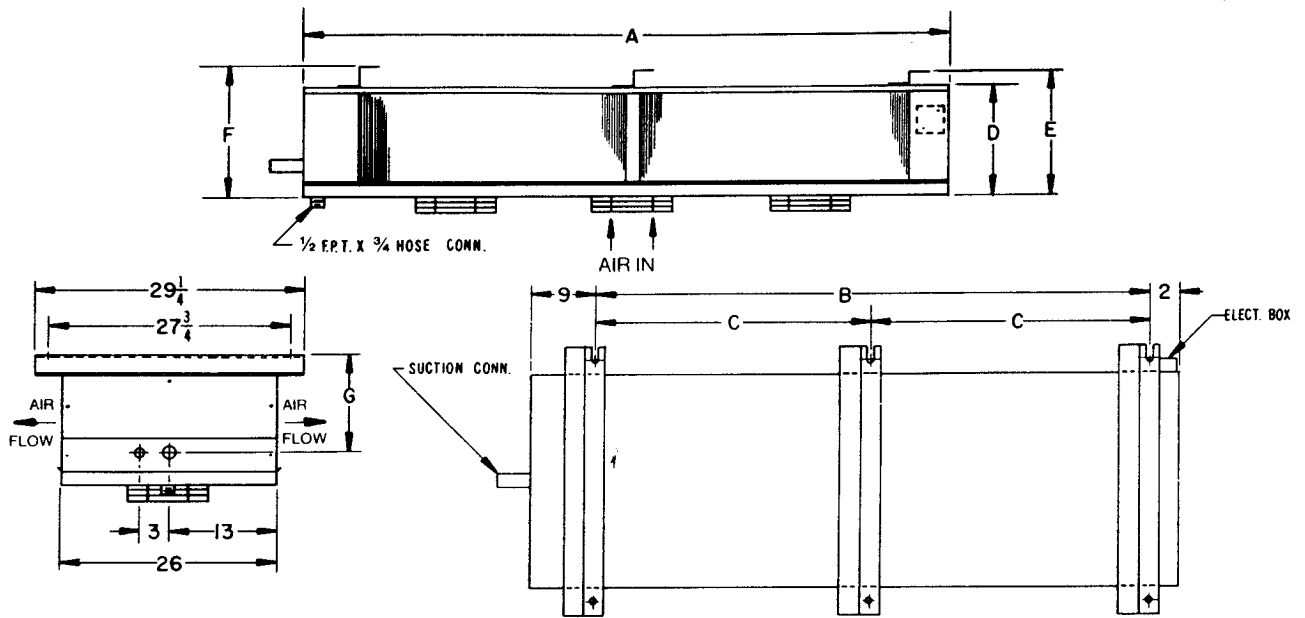
MODEL NOMENCLATURE



Gentle flow units are not designed for room temperatures lower than +25°F.

ORDER INFORMATION

1. Model Number
2. Type of Refrigerant
3. Suction Temperature
4. Type Defrost
5. Motor Electrical Characteristics
6. Liquid Temperature at TXV
7. Design Tons



Dimensions

Model	No. Fans	No. Hangers	A	B	C	D	E	F	G
GF-54	2	2	60	49	—	7-1/4	8-1/4	8-3/4	6-1/2
GF-72	2	2	60	49	—	7-1/4	8-1/4	8-3/4	6-1/2
GF-105	3	3	84	73	36-1/2	7-1/4	8-1/4	8-3/4	6-1/2
GF-134	3	3	84	73	36-1/2	8-3/4	9-3/4	10-1/4	7-3/8
GF-192	4	3	102	91	45-1/2	10-1/4	11-1/4	11-3/4	8-7/8
GF-280	4	3	102	91	45-1/2	13-1/4	14-1/4	14-3/4	11-7/8

Model	Liquid Conn.	Suction O.D. Sweat	Net Weight
GF-54	1/2 SAE Flare	7/8	157
GF-72	1/2 SAE Flare	7/8	172
GF-105	1/2 SAE Flare	1-1/8	221
GF-134	1/2 SAE Flare	1-1/8	250
GF-192	1/2 SAE Flare	1-1/8	314
GF-280	1/2 SAE Flare	1-3/8	383

Colmac reserves the right to change specifications without notice.



Other Quality Products From Colmac Coil



Heating and Cooling Coils



Heat Pipes for Heat Recovery



Dry Coolers for Glycol or Gas Cooling



Custom Evaporators & Baudelot Coolers



Air Cooled Condensers

CE(PED) Certification, ASME Sec. VIII, Canadian Registration Number, UL508, Canadian Standards Association



CRN



CSA

Visit www.colmaccoil.com for more information and resources:

- Product Information
- Product Literature
- Sales Rep Locator
- Sales Rep e-Library
- Product Videos

North American Headquarters

Colmac Coil Manufacturing, Inc.
370 N. Lincoln St. | P.O. Box 571
Colville, WA 99114 | USA
+1.509.684.2595 | +1.800.845.6778

Midwest US Manufacturing

Colmac Coil Midwest
350 Baltimore Dr. | Paxton, IL 60957 | USA

"The Heat Transfer Experts"