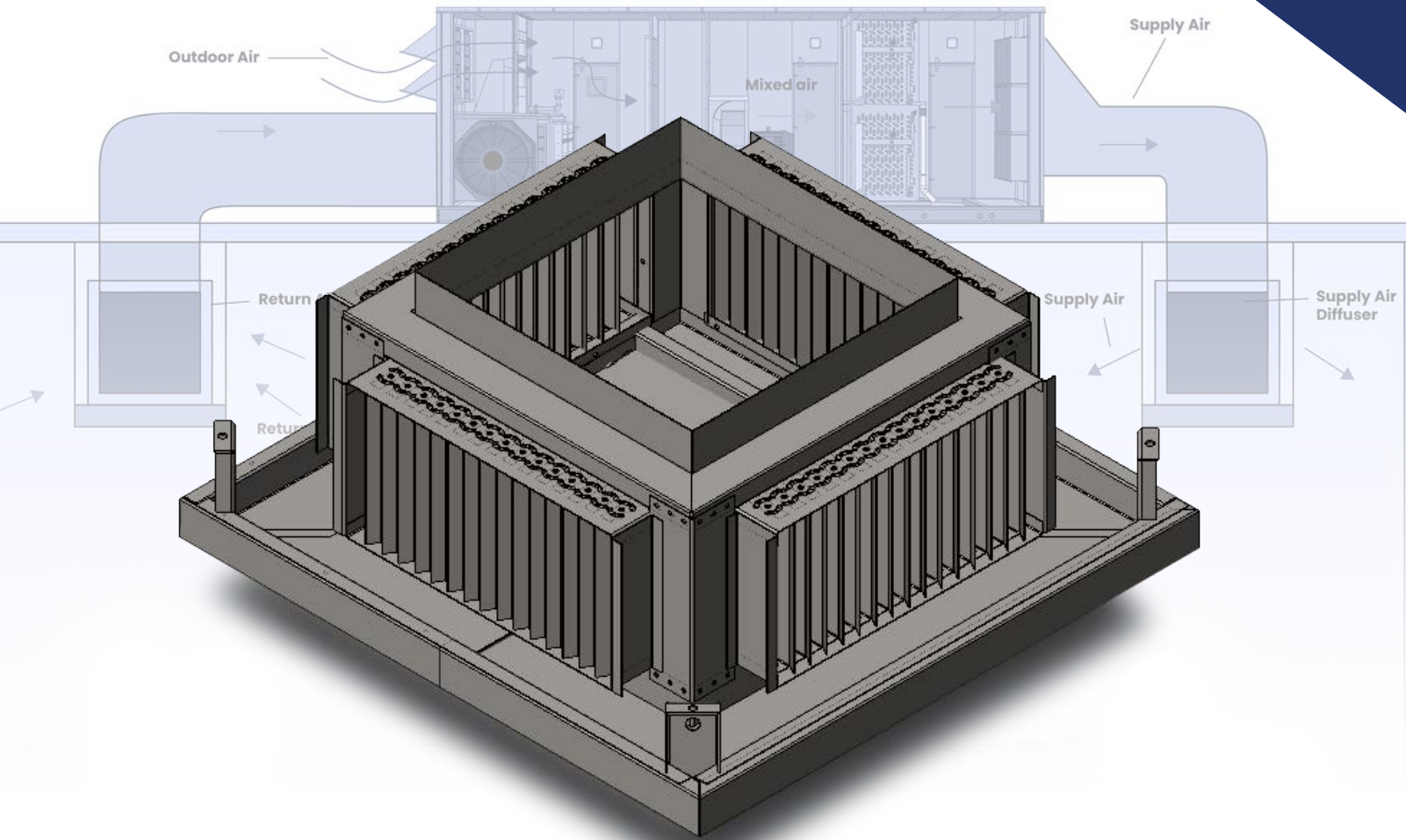


HYGENAIR™

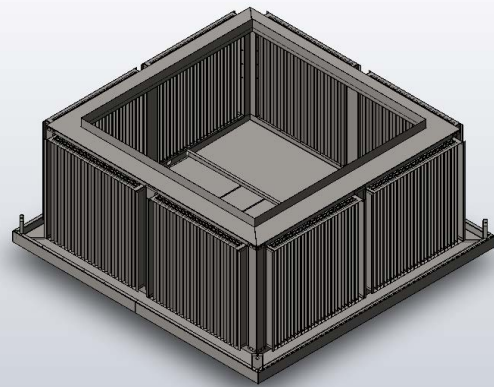
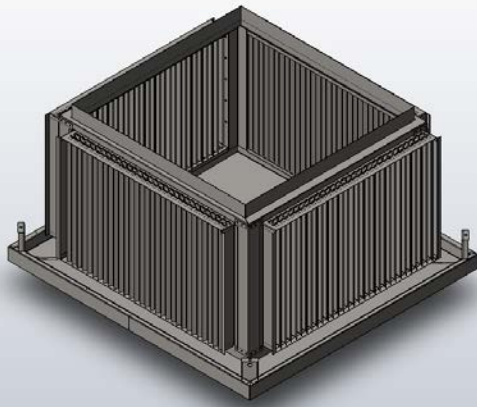


Supply Air Diffuser and Return Air Box Options



Key Features:

- 304 stainless steel standard construction
- Customizable size on duct attachment collar
- Stitch welded, caulked seams
- Single drain connection on all sizes
- Insulation cover is heat traced



HygenAir™ Supply Air Diffusers

The HygenAir™ Supply Diffuser is designed to deliver clean and conditioned air into the processing space while maintaining high levels of hygiene. Incorporating design features such as smooth surfaces, easy-to-clean materials, and minimal crevices to prevent the buildup of dust, dirt, and microbes. With the ability to adjust airflow patterns to optimize comfort and air distribution within the environment.

Features and Options:

- All stainless construction
- Insulated and heat traced as standard (120V)
- Adjustable louvers option in either direction
- Customizable size on duct attachment collar
- Single drain connection on all sizes

HygenAir™ Supply Air Diffuser Configurations:

- Standard stainless-steel construction, mechanically fastened together
- Fully seal welded
- Drain-pan only option

HygenAir™ Return Air Drop Boxes

The HygenAir™ Return Air Box is designed to collect and channel air from the production space back to the hygienic air unit for recirculation. Engineered with a stainless-steel design and features that prioritize air quality and prevent large pieces of debris from recirculating back through the hygienic air handler.

Features and Options:

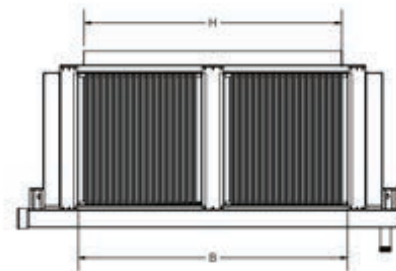
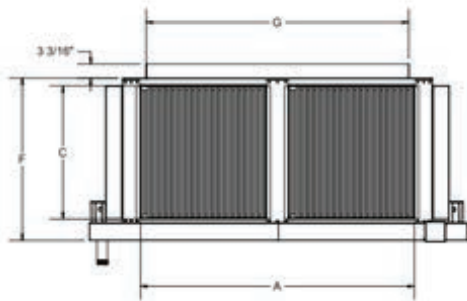
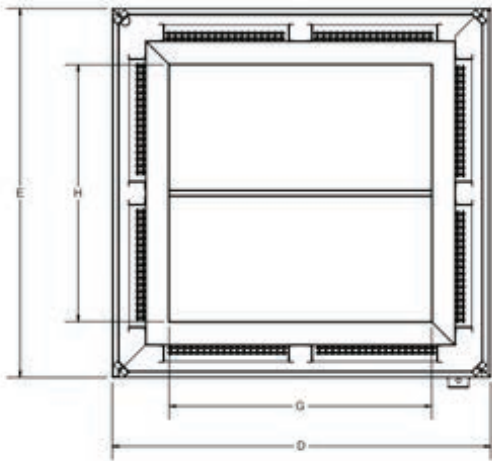
- All stainless construction
- Insulated and heat traced as standard (120V)
- Optional intake screen
- Customizable size on duct attachment collar
- Single drain connection on all sizes

HygenAir™ Return Air Drop Box Configurations:

- Standard stainless-steel construction, mechanically fastened together
- Fully seal welded
- Screen and drain-pan
- Drain-pan only option

HygenAir™ Supply Air Diffusers & Return Drop Boxes

CFM	Size and Dimensions (inches)								Weight (pounds)		
	A	B	C	D	E	F	G	H	Sheetmetal	Total	Louver
6k	24	24	12	47.5000	45.6250	18.0365	25.2874	24.2330	187.00	189.00	106.00
12k	32	32	18	55.5000	53.6250	24.3158	35.2860	34.2321	245.75	248.00	185.60
18k	38	36	22	61.5000	57.6250	28.4933	41.4243	40.3646	284.40	286.75	257.00
22k	42	42	24	65.5000	63.6250	30.2983	45.2842	44.2309	329.25	332.00	307.00
30k	46	44	30	69.5000	65.6250	36.3885	49.7639	48.5810	357.50	361.25	408.00
40k	60	60	30	85.5000	83.6250	36.7696	59.2682	58.2160	570.25	574.25	492.00
52k	70	68	34	95.5000	91.6250	41.0157	71.3442	70.2907	662.00	667.25	658.40
60k	76	74	36	101.5000	97.6250	43.1726	71.3375	70.2846	760.00	766.50	752.00
70k	84	82	38	109.5000	105.6250	45.1434	77.3297	76.2776	866.50	873.25	852.80



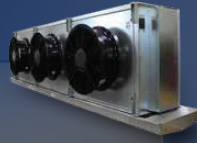
Exclusive Feature:

The Colmac Coil HygenAir™ Hygienic Air Handler Selection Software is a helpful tool for process room designers. This software allows users to precisely select the size and quantity of supply air diffusers and return air boxes necessary for their specific projects. Request access at www.colmaccoil.com

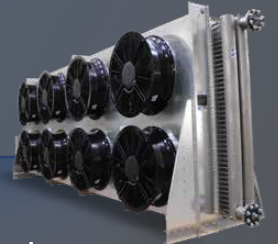
QUALITY PRODUCTS FROM COLMAC COIL



A+Series®
Air Coolers



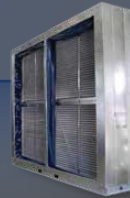
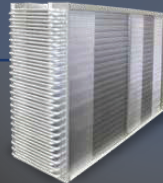
Fluid Coolers
and Condensers



Custom Evaporators
and Blast Freezers



Heat Pipes



Heating and
Cooling Coils



North American Headquarters

Colmac Coil Manufacturing, Inc.
370 N. Lincoln St. | P.O. Box 571
Colville, WA 99114 | USA
+1.509.684.2595 | +1.800.845.6778

Midwest US Manufacturing

Colmac Coil Midwest
350 Baltimore Dr.
Paxton, IL 60957 | USA



ASME Sec. VIII, Canadian Registration Number, UL508, Canadian Standards Association